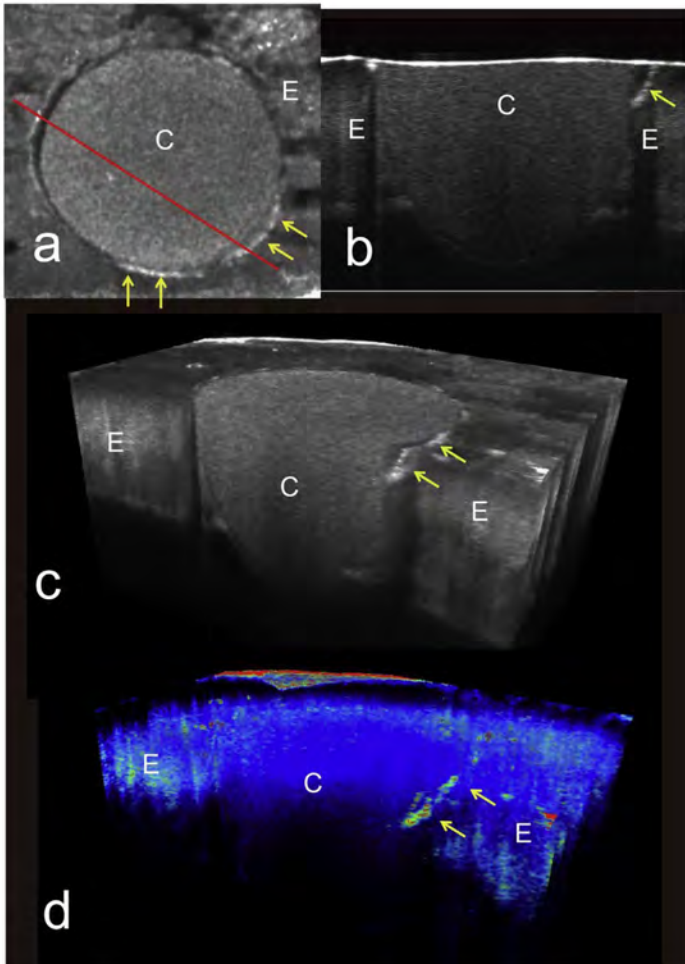


## Outline of research

### **Assessment of enamel cracks at adhesive cavosurface margin using three-dimensional swept-source optical coherence tomography**

The aim of this study was to evaluate enamel cracks at the cavosurface margin of composite restorations using SS-OCT.



What is OCT?

OCT (optical coherence tomography) is an interferometric modality to visualize real-time cross-sectional image.

J Dent. 2017

doi: 10.1016/j.jdent.2017.04.005

PMID: 28433536