

Solid-state NMR Studies

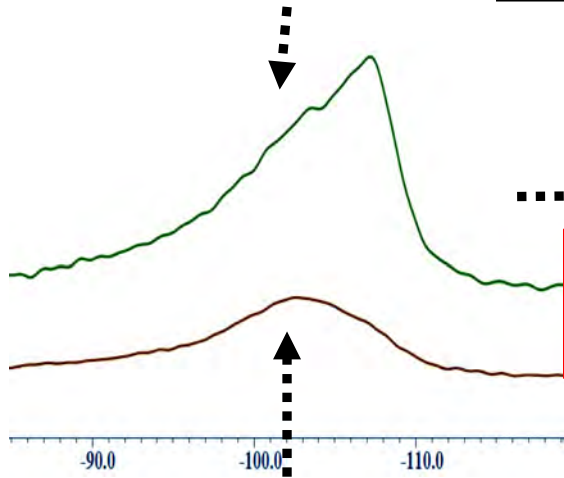
Silver diammine fluoride (SDF) application on enamel and dentin forms:

- fluorhydroxyapatite (FHAp),
- CaF_2
- fluorine-substituted carbonates (FSC)

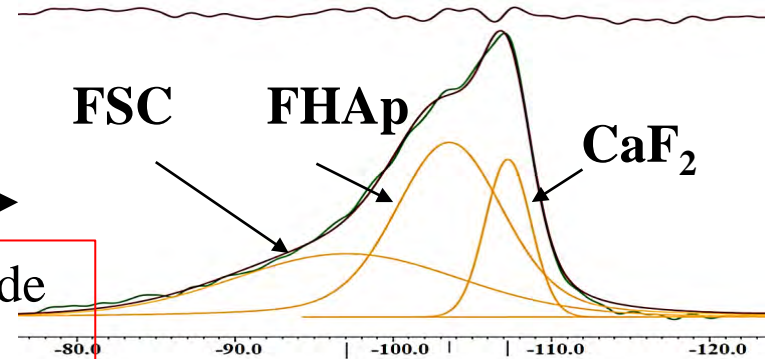
Revealed by ^{19}F solid-state magic angle spinning NMR

Joint Research with
RIKEN SPring-8 Center, Yokohama, JP

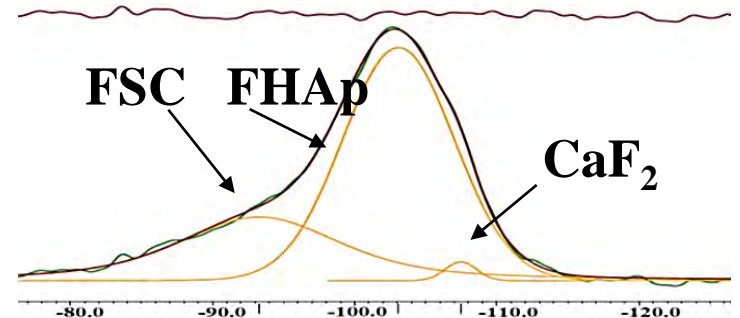
silver diammine fluoride **SDF-treated dentin**



Differences in fluoride uptake were found



SDF-treated enamel



Dental materials DOI: [10.1016/j.dental.2022.04.017](https://doi.org/10.1016/j.dental.2022.04.017)