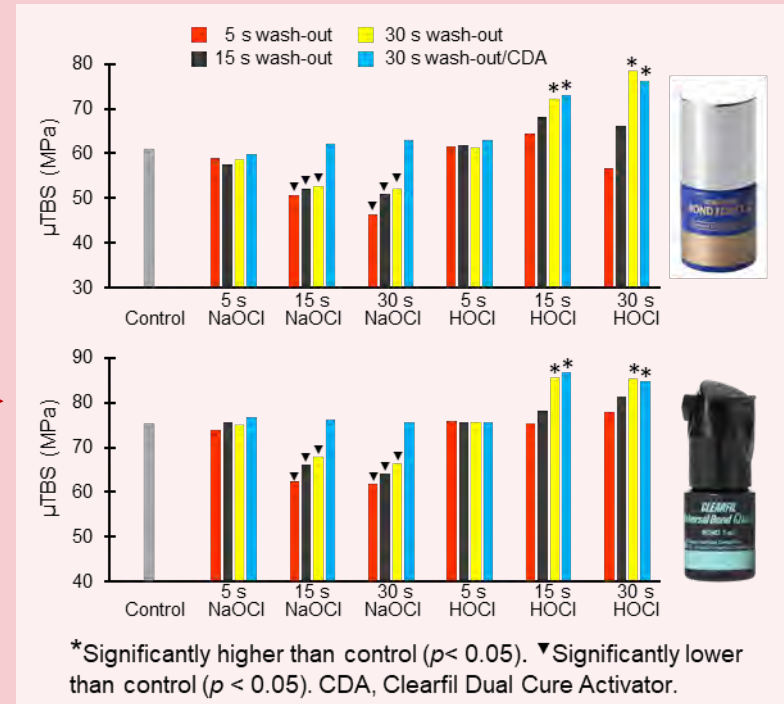
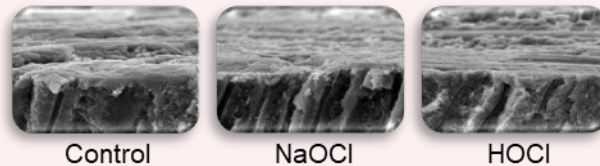
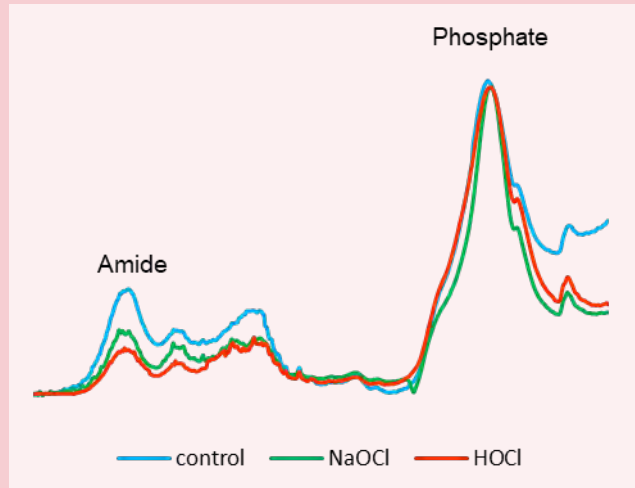


Smear layer deproteinization with NaOCl and HOCl: Do application/wash-out times affect dentin bonding of one-step self-etch adhesives?



- HOCl exhibited a stronger deproteinizing effect than NaOCl.
- HOCl could be washed away more easily, leaving fewer oxidative residues on pretreated dentin surface.
- Pretreatment with NaOCl for 15 or 30 s significantly decreased dentin bond strength.
- Pretreatment with HOCl for 15 or 30 s followed by a wash-out time of 30 s significantly improved dentin bond strength.