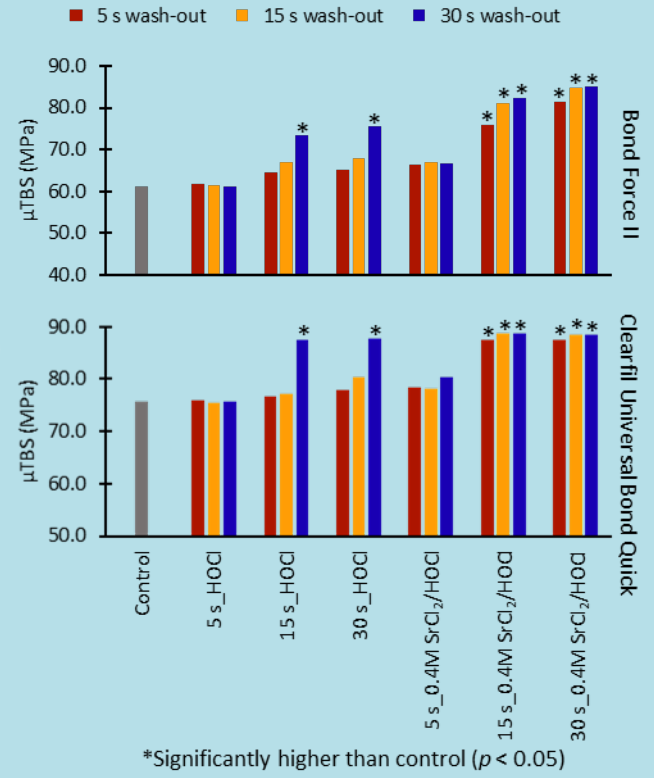
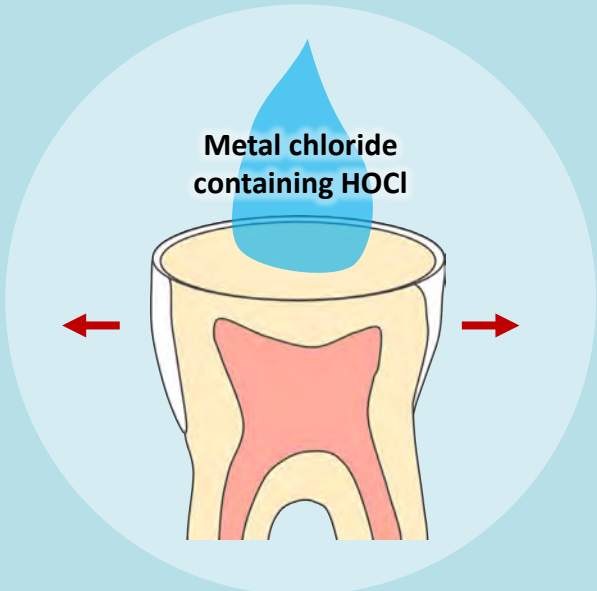
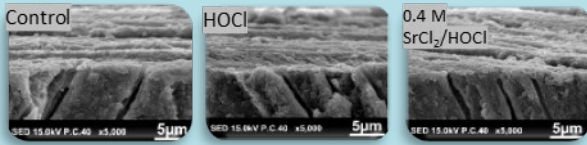
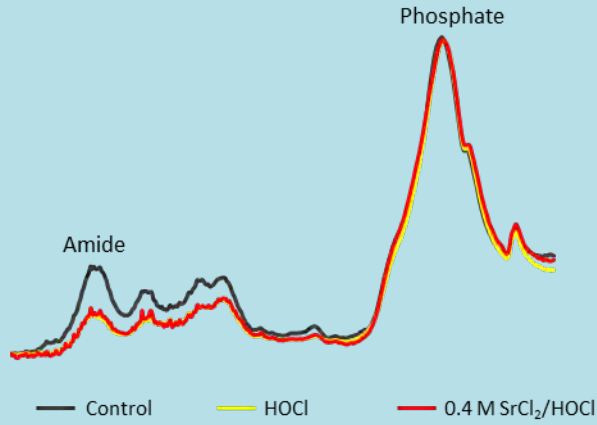


Addition of metal chlorides to a HOCl conditioner can enhance bond strength to smear layer deproteinized dentin



- HOCl pretreatment for 15 or 30 s significantly reduced the organic phase in the dentin smear layer and significantly improved the bond strength to dentin if washed out for 30 s.
- Addition of SrCl₂ (0.05–0.4 M) or ZnCl₂ (0.05–0.2 M) did not affect the deproteinizing effect of HOCl.
- Higher concentrations of metal chloride (0.4 M SrCl₂) improved bond strength to dentin at shorter wash-out time.